

Energy Partners

A monthly look at the happenings of and related to:



New-Mac Electric Cooperative

Your Touchstone Energy® Partner 

New-Mac members to receive rate increase in April

As reported by CEO/General Manager Mitch McCumber to the membership at the co-op’s annual meeting this past October, New-Mac Electric members will receive a rate increase in 2016.

The increase will not be put in place until April and will be reflected in the bills received in May. The amount of the change is expected to be an increase of \$.006 per kilowatt-hour on residential bills. Also planned is an increase of \$2.50 on the monthly service availability fee (minimum bill) and rental lights will go up \$1.

“We’re always very cognizant of the financial impact of a rate increase,” said McCumber, “and we don’t have them unless we don’t have any other choice.”

Such a time has arrived – due to a rate

increase from supplier KAMO Power (Vinita, Okla.) and other operating costs. It was not unexpected. McCumber warned members in 2015 that an increase would likely occur the following year in anticipation of power cost increases from KAMO and AECI (Springfield). This upcoming rate change will mark only the fourth increase to New-Mac members in the past 24 years.

“We always strive to provide quality service at the most affordable rates possible,” said McCumber.

While the co-op strives to maintain rates, it remains aggressive in its system maintenance and right-of-way clearing. New-Mac members have also benefitted from additional billing services in recent years, such as online access to their account and a 24/7

automated phone bill-payment service.

This all comes during a climate of great uncertainty regarding future electric rates. New EPA regulations are threatening the affordability and reliability of electricity, as the EPA is attempting to shut down coal-fire generation, which is the most affordable and abundant generation source in the United States.

New-Mac has received outstanding assistance from the membership in signing cards and petitions in the past encouraging legislators to work to keep electricity affordable and reliable. New-Mac will continue to need the help of its members. Members can stay involved in efforts to maintain future rates by visiting mocoopnation.org or clicking the Co-op Nation link at newmac.com.

One high school junior can win a trip to Washington D.C.

New-Mac will send two students to Missouri state capitol

Attention high school juniors! How would you like to win an expense-paid trip to Washington D.C. in June? Or, you might win a trip to Jefferson City to learn about our state government!

As announced by CEO/General Manager Mitch McCumber at the co-op’s annual meeting this past October, New-Mac Electric is sponsoring a contest in 2016 which will send one student to Washington D.C. and two to Missouri’s capitol.

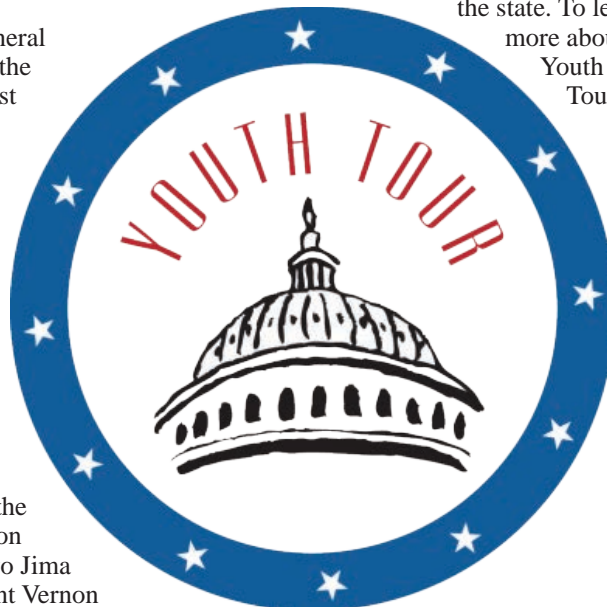
Youth Tour is a contest sponsored by electric cooperatives across the nation. New-Mac’s participant will travel with approximately 100 Missouri students on a week-long, expense-paid trip to our nation’s Capitol. There, students will see sites such as the Jefferson Memorial, Washington Monument, Ford’s Theatre, Iwo Jima Memorial, White House, Mount Vernon

Plantation and many more. Also, they will learn about the workings of our government while developing life-long friendships with peers from across the state. To learn more about Youth Tour,

visit youthtour.coop.

The Jefferson City trip is called C.Y.C.L.E. (Cooperative Youth Conference & Leadership Experience). It is a three-day trip where students learn about our state government, cooperatives and leadership in general.

See *Youth Tour*, page 4



INSIDE THIS ISSUE:

- Youth Tour/C.Y.C.L.E..... page 1
- Rebates page 2
- Be prepared for winter page 3



New-Mac Electric Cooperative

Your Touchstone Energy® Partner 

Energy Partners is a monthly publication of New-Mac Electric for the purpose of informing members of the programs, services and happenings of, and related to, the cooperative.

Stay away from downed lines

Heavy snows, ice and winds are all capable of bringing down power lines. New-Mac would like to remind everyone to stay away from downed power lines.

Please **don't** touch, attempt to move, or drive over downed lines. Also, **don't** touch anyone who is in contact with power lines.

Always report downed power lines to New-Mac Electric at 451-1515 or (800) 322-3849.

Assistance is available

If you are having a problem paying your New-Mac account, please call us to make arrangements. Please don't disregard paying your bill. There are programs and options (such as budget billing) designed to assist you. So, please give us a call at 451-1515 or (800) 322-3849.

LOW INCOME HOME ENERGY ASSISTANCE PROGRAM / EMERGENCY ASSISTANCE

Jasper County

(417) 781-0352

McDonald County

(417) 845-6011

Newton County

(417) 451-2206

Please don't lock us out

Remember New-Mac Electric always needs to have access to your meter both for periodic inspections and in the event of an outage. So, make sure the co-op can get to your meter, and any existing lock arrangements with New-Mac need to be maintained.

Cooperative will continue to offer rebates in 2016

Members can receive bill credits for qualifying purchases of window A/C units, water heaters and various heat pumps

In 2016, New-Mac Electric will continue to help members with rebates on energy-efficient electric water heaters, window air-conditioning units, and three types of heat pumps.

New-Mac hopes members will use these rebates as incentives to make energy-efficient purchases, which will bring additional savings through energy conservation.

In order to be eligible for a rebate, New-Mac must receive a completed rebate form and a copy of the purchase receipt within 90 days of the date of purchase. Rebate forms are available online at newmac.com and at both the Neosho and Anderson offices.

Rebates will be applied to your New-Mac bill in the form of an energy credit.

If you have questions about any of our rebates or their qualifications, call Josh or Tom in our member services department at 451-1515 or 800-322-3849.

New-Mac Electric 2016 Rebates

WINDOW AIR-CONDITIONING UNITS – \$50

- must be submitted within 90 days of purchase
- must be Energy Star rated
- limit one per address
- service where installed must use 6,000 kWh per year
- for residential customers only

WATER HEATERS – \$50

- must be submitted within 90 days of purchase
- must have an energy rating of .9 or better
- limit two per address
- only for replacement of another electric water heater or for a new home
- tankless (on-demand) water heaters are not eligible
- service where installed must use 6,000 kWh per year
- for residential customers only

DUAL-FUEL HEAT PUMPS – \$150 PER TON

- must be submitted within 90 days of purchase
- must be at least 16.5 SEER
- must be dual fuel (having natural gas or propane for back-up)
- for residential or commercial customers

MINI-SPLIT HEAT PUMPS – \$150 PER TON

- must be submitted within 90 days of purchase
- must be at least 16.5 SEER
- must not have electric resistant heat as a backup
- for residential or commercial customers

GROUND-SOURCE HEAT PUMPS – \$300 PER TON

- must be submitted within 90 days of purchase
- must be at least 19.1 EER
- must provide documentation of Manual J load calculation
- If only the unit needs replaced and the looping is still present, customers can get \$150 per ton if the new unit is a gain of at least 3 EER.
- 10 tons or more must be pre-approved
- minimum insulation requirements (R-38 for ceiling, R-13 for walls)
- for residential or commercial customers

Extend the day with a security light

If evening seems to be setting in too soon, and you've still have chores to do, or perhaps you'd just like the security of some additional lighting, then New-Mac Electric may have the solution for you.

Dusk-to-dawn lights, also commonly called security lights, are available from New-Mac for a

monthly fee.

New-Mac will install a 100-watt, high-pressure sodium light on an existing meter or transformer pole. The co-op will then maintain and supply the electricity to the light (it does not go through your

Preparation is the best way to weather winter

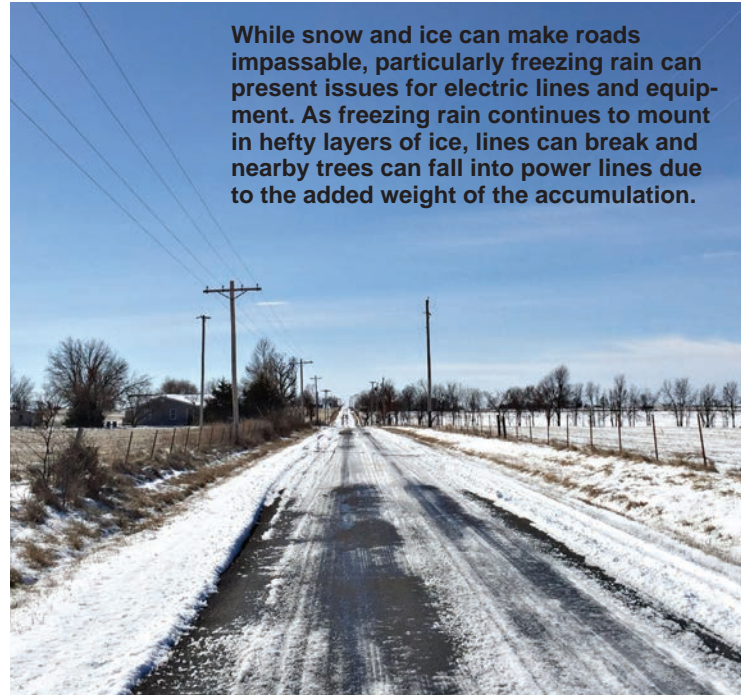
The New-Mac Electric service area has been fortunate so far in terms of what *Ole Man Winter* can bring, but we all know in south-west Missouri the weather can change in a hurry.

So, New-Mac encourages you to always be ready for winter's worst. Please keep the following items on hand, and be prepared:

- Flashlight (with extra batteries) and candles.
- Battery-powered radio.
- Bottled water and non-perishable food items.
- Manual can opener.
- Extra medicine and baby items.
- First-aid supplies.
- Back-up heating source – NEVER use a charcoal grill to cook or heat inside!
- Fire extinguisher and smoke detector.
- New-Mac also reminds everyone to never approach downed power lines as they may be energized.

In the event of outages, New-Mac customers should have their map number (location number) ready and call 451-1515 or 800-322-3849. Don't assume that someone else has already called for your area.

During extended outages, customers can get updates on the restoration efforts by checking our website, newmac.com, and



While snow and ice can make roads impassable, particularly freezing rain can present issues for electric lines and equipment. As freezing rain continues to mount in hefty layers of ice, lines can break and nearby trees can fall into power lines due to the added weight of the accumulation.

through local media outlets.

If you are on social media, updates will come right to your computer or smart phone by liking our Facebook page, www.facebook.com/NewMacElectric or by following us @NewMacElectric on Twitter.

Proper installation is critical when using generators

Generators offer a reliable back-up source for electricity during an extended power outage. However, they must be installed and used correctly to avoid very serious health and safety risks – not only to your household but to the linemen working to restore power. The best way to ensure you and co-op line crews stay safe when you are using a generator is to educate yourself and plan ahead.

Generators come in a variety of sizes. They can range from 500 watts up to several megawatts of output, and run on gasoline, diesel, propane or natural gas. The size of generator needed can be determined by totaling the wattage of the lights, appliances, devices, etc., and then add about 20 percent for the increased start-up power requirements.

A whole-house generator – one that is tied directly into your wiring – must have a double-throw transfer switch installed at your breaker panel by a qualified electrician. Without the switch, a generator can backfeed 240 volts to the transformer, where it is then stepped up to 7,200 volts and sent down the lines, creating a life-threatening situation for the linemen trying to restore your power.

The double-throw switch makes it impossible to have both the generator and the power supplier service connected at the same time. It opens one in order to close the other.

Portable generators (usually with wheels) are smaller and can supply enough power for necessary applications but not the whole house. These generators also need a double-throw switch.

Another reason for having a qualified electrician hook up your generator is for the protection of everything you plan to have powered by it. Improperly connecting to the generator could damage all of your appliances, electronics, etc.

When weather threatens, generators can provide peace-

of-mind, but they must be installed correctly. Please consider the following safety tips involving generators:

- Follow the instructions included with your generator.
- Make sure your generator is properly grounded.
- Never overload the generator.
- Never add fuel while it is running.
- Never use a generator indoors.
- Always keep a fully-charged class ABC fire extinguisher nearby.
- Turn off all appliances powered by your generator before shutting it down.

Energy Partners'
Recipe of the

CINDERELLA
CRISPS

Submitted by New-Mac member: **Debby Lakin**

6 slices trimmed white bread (each cut into 4 strips)
1 can sweetened condensed milk
2½ c. flaked coconut

Using 2 forks, roll bread strips in sweetened condensed milk, coating all sides. Then roll in coconut. Place on well-greased baking sheet and bake at 375° for 8-10 min. Remove at once from baking sheet. Makes 24.

Send your recipe, along with your name and account number, to: Recipes, c/o New-Mac Electric, P.O. Box 310, Neosho, MO 64850; or recipes@newmac.com. If your recipe is selected, New-Mac will apply a \$15 credit to your bill.

○ Youth Tour

Continued from page 1

New-Mac's Youth Tour contest is open to current high school juniors in the following school districts: Carthage, Diamond, East Newton, Joplin, McDonald County, Neosho, Pierce City, Sarcoxie, Seneca and Wheaton. Home or private school 11th-grade students residing in the aforementioned districts are also eligible. Immediate family members of New-Mac Electric employees or board members are not eligible to participate.

To participate: each student is required to write a typewritten essay of at least 500 words and no more than 750 words in length. The topic of the essay will be "The Importance of Electric Cooperatives." The essay should cover both the history of electric cooperatives and their importance today.

- All essays must include a cover sheet with the following:

- Name
- Address
- Telephone number
- Parents'/Guardians' names
- School

Essays should be sent to: Youth Tour, New-Mac Electric, PO Box 310, Neosho, MO 64850. Or, they can be emailed to jk-ing@newmac.com with "Youth Tour" in the subject line. All essays must be received by March 4, 2016.

Finalists will be selected and interviewed by a panel of judges at New-Mac's Neosho office. The top winner will represent New-Mac Electric June 10-16 in Washington D.C. Two runners-up will be selected to go to Jefferson City in July.

New-Mac representatives will be visiting schools in January to share more about this opportunity. If you have additional questions, call our member services department at 417-451-1515 or 800-322-3849.



P.O. Box 310 — 12105 East Highway 86
Neosho, Missouri 64850

Telephone: 417/451-1515 800/322-3849

Fax: 417/451-9042

Pay-by-Phone: 855/874-5348

Office Hours: Neosho — 8 a.m. to 5 p.m.
Anderson — 8 a.m. to 4:30 p.m.

Or visit us on the Web at
www.newmac.com

Management

CEO/General Manager..... Mitch McCumber
Manager of Administration.... Mary Hatfield
Manager of Operations..... Stan Irsik
Controller..... Lisa McMeen
Manager of Marketing Mark K. Rakes
Billing Supervisor..... Vickie Stuart

Board of Directors

District 1 Martin Youngblood
District 2 Kenneth Daniels
District 3 Bobby Fields
District 4 Beryl Kennedy
District 5 Billy P. White
District 6 Paul Sprenkle
District 7 Maurice Mailes
District 8 Jason Ruddick
District 9 Jamey Cope

Services Provided to Members

Call our consumer services department for information on the following services:

Automated Phone Payment

Autowithdrawal Payment

Green Power

Levelized Billing

Online Payment & Usage History

Rental Light

Meeting rooms available at both locations

Credit Card Acceptance

Safety Programs (upon request)

Surge Protection

Questions? Comments?

Contact: Mark K. Rakes
P.O. Box 310, Neosho, MO
mrakes@newmac.com

Coming in March!



New-Mac



UNIVERSITY



As announced at our annual meeting, we are rolling out New-Mac University in 2016. This educational program will feature classes of interest to our members regarding the cooperative. These courses will be offered at both the Neosho and Anderson co-op offices.

Next month, we'll give you the dates for the first course in both New-Mac offices. These classes are free, but we will ask that you RSVP. Our first offering will be:

LESSON 1: Understanding Your Electric Usage – Just the Facts

Stay tuned for more details

○ Lights

Continued from page 2

meter) for a \$10 monthly rental fee. If the light ever stops working, New-Mac will repair or replace the light at no additional charge.

Higher wattage lights or installations requiring the setting of new materials may

also be available for additional fees.

Also, if a light owned by a customer is in need of repair, New-Mac is willing to make those repairs for the cost of parts (if the co-op has the necessary parts). These repairs will take place as work orders permit when a truck is in your area.

If you are interested in a security light at your location, contact our billing department at 451-1515 or 800-322-3849.

Pay by Phone

Don't forget you can pay your bill by phone anytime – **24/7** – with our automated, toll-free payment line.

